

Pocket Guide for the Picnic Filming Locations

Bob Harris: v.1.0a







Halstead

Halstead, Kansas: (30 miles Northwest of Wichita); Riverside Park in Halstead is where the entire Labor Day picnic portion of the movie was filmed: (May 23 - June 3, 1955); 10 days of shooting;

May 23 - June 3, 1955; 10 days of shooting; the film company moved on to Riverside Park in Halstead, KS; Shooting started on May 26; Riverside Park in Halstead is where the entire Labor Day picnic portion of the movie was filmed:

A: Where the entrance to "Riverside Park" was filmed, (the muddy "Little Arkansas River" runs right by Riverside Park);

B: This where the suspension bridge is located;

C: Where the Owens Party decided to have their family picnic, (now just a pile of rocks); (see photos below);

D: Where the dock was constructed for the dance scenes;

E: Where a second dock was constructed across the river from the "dance dock" where the swan boat landed the "Queen of Newalloh" and where she gave her speech;

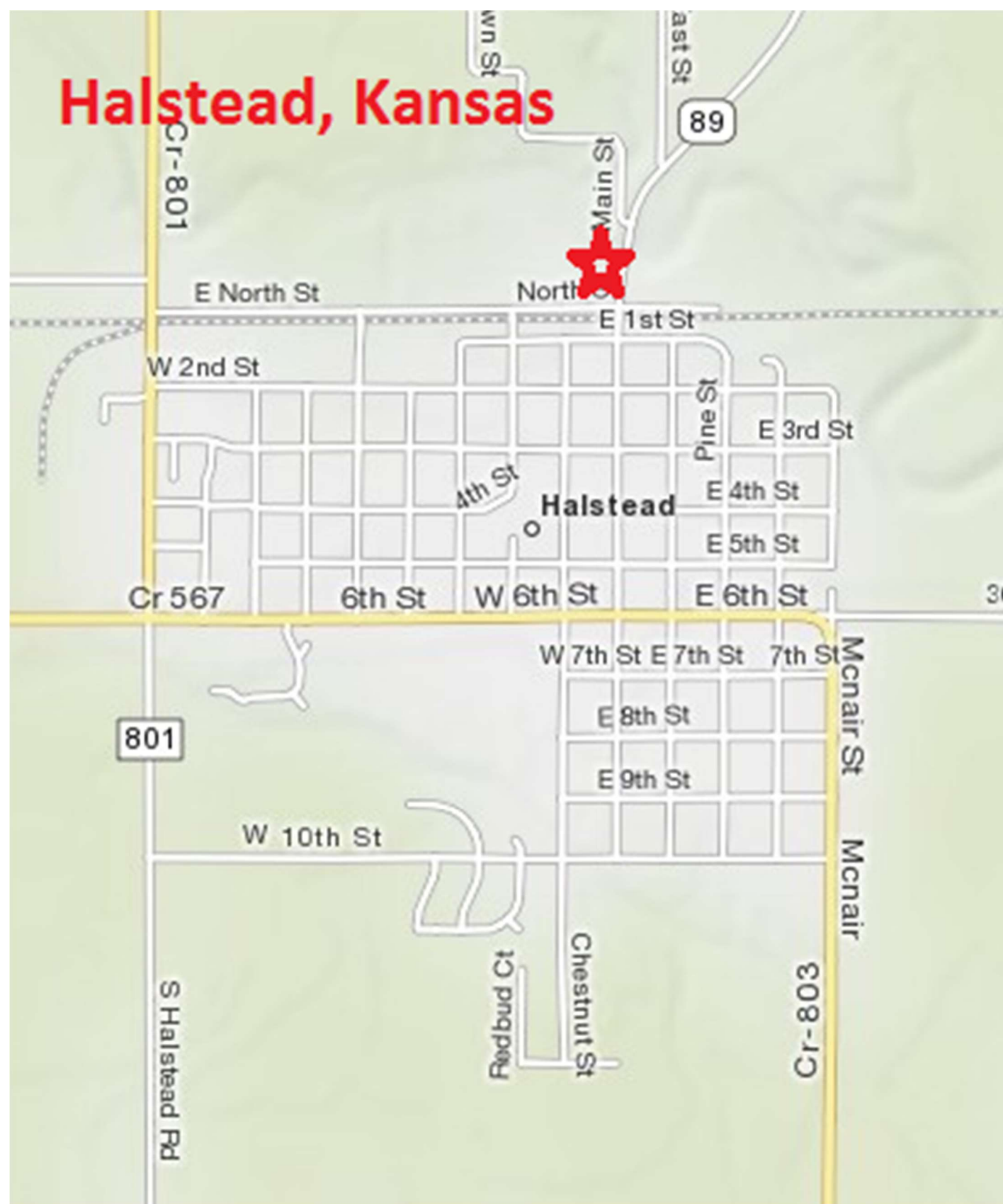
F: Where some picnic scenes were filmed in the ball park, located on the other side of the suspension bridge (these were some of the picnic "games" were shot, that needed a wide open area; The Three-Legged Race, Rolling-Pin Throw, Girl-Carrying Contest, and Trained Seals contests were filmed there);

H: Where the ban stan was located;

I: Where a museum is located that houses the original "Swan Boat" from Picnic;

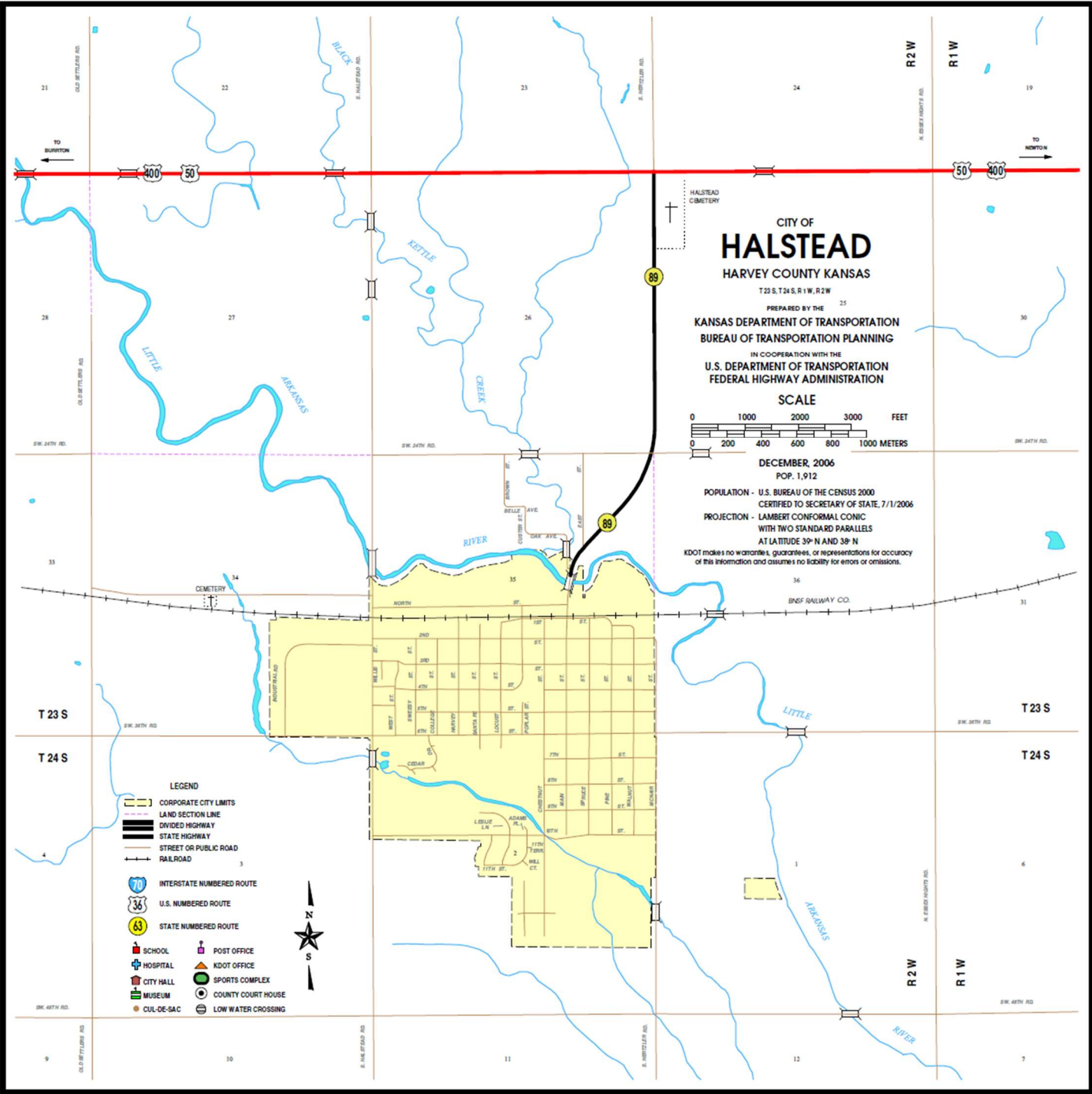
J: Where the waterfall is located, down stream from the suspention bridge (which can be seen from the scene where the picnic site was filmed (C) -- see photo below;

Halstead, Kansas

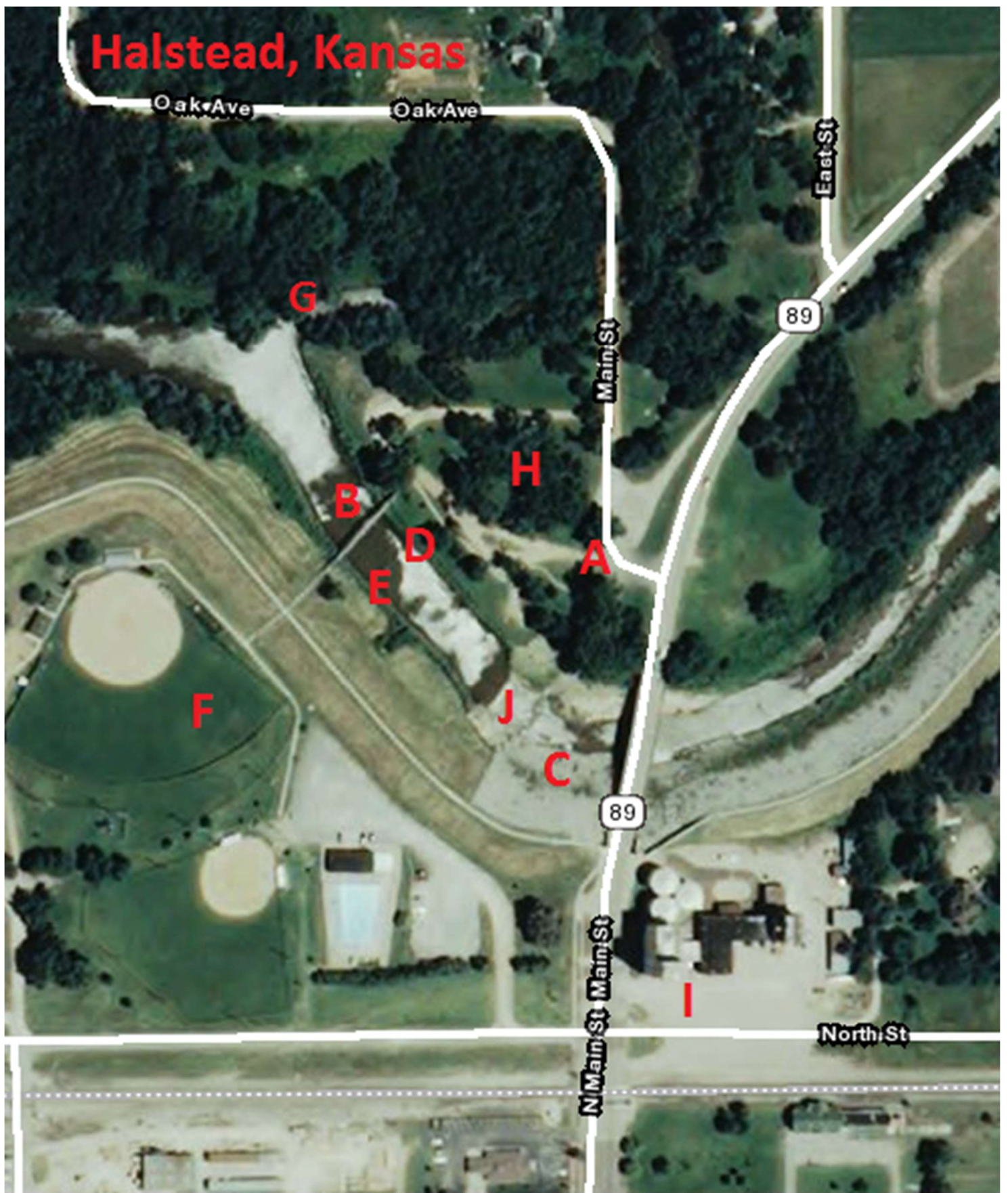


Halstead, Kansas





Halstead, Kansas



Halstead, Kansas

G

Main St

H

Riverside Park

B

D

A

E

F

J

C

89

E PC





















**Halstead, Kansas
Picnic Filming Location**

**Owen's Family
Picnic Spot**





Halstead, Kansas Picnic Filming Locations







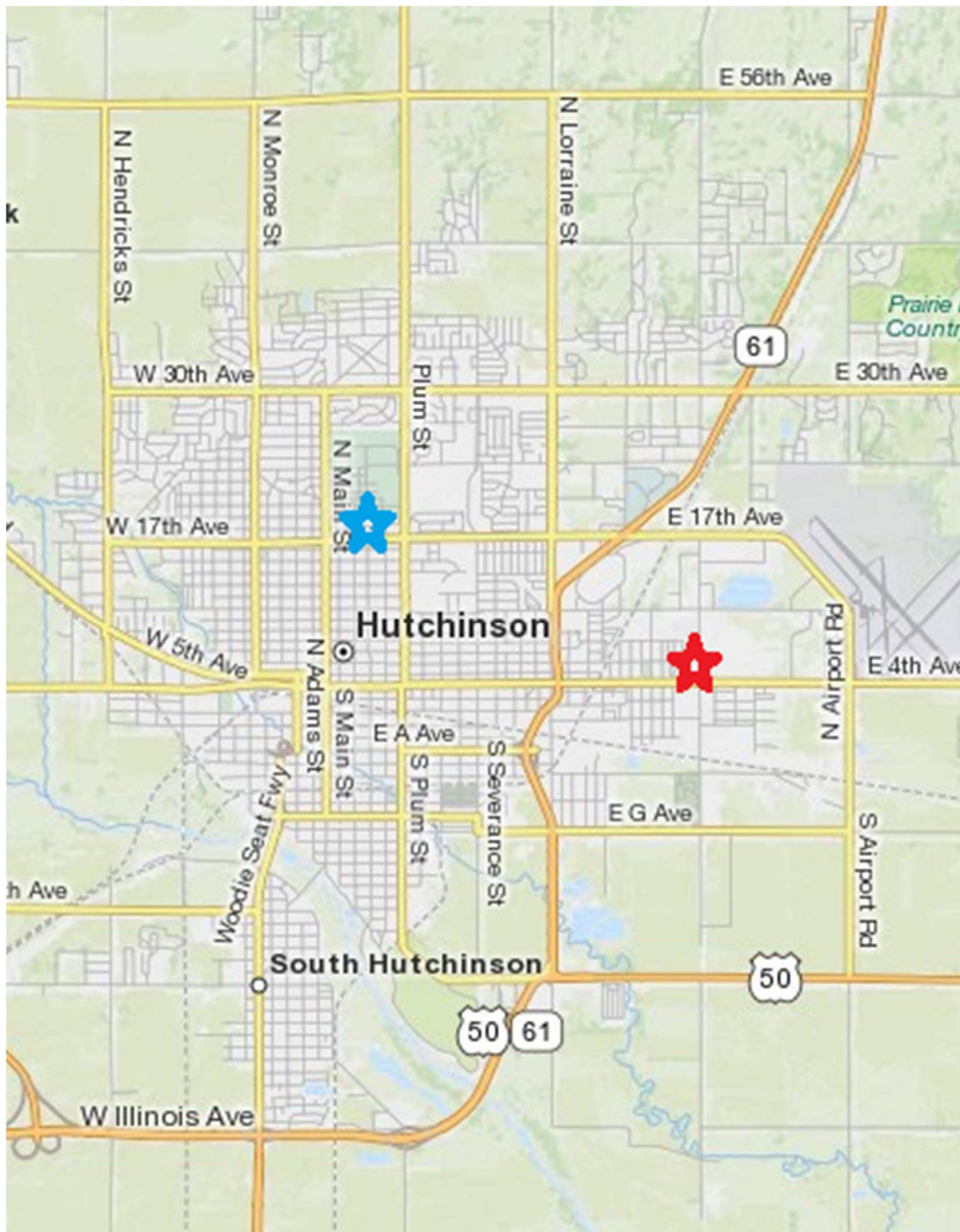
Hutchinson

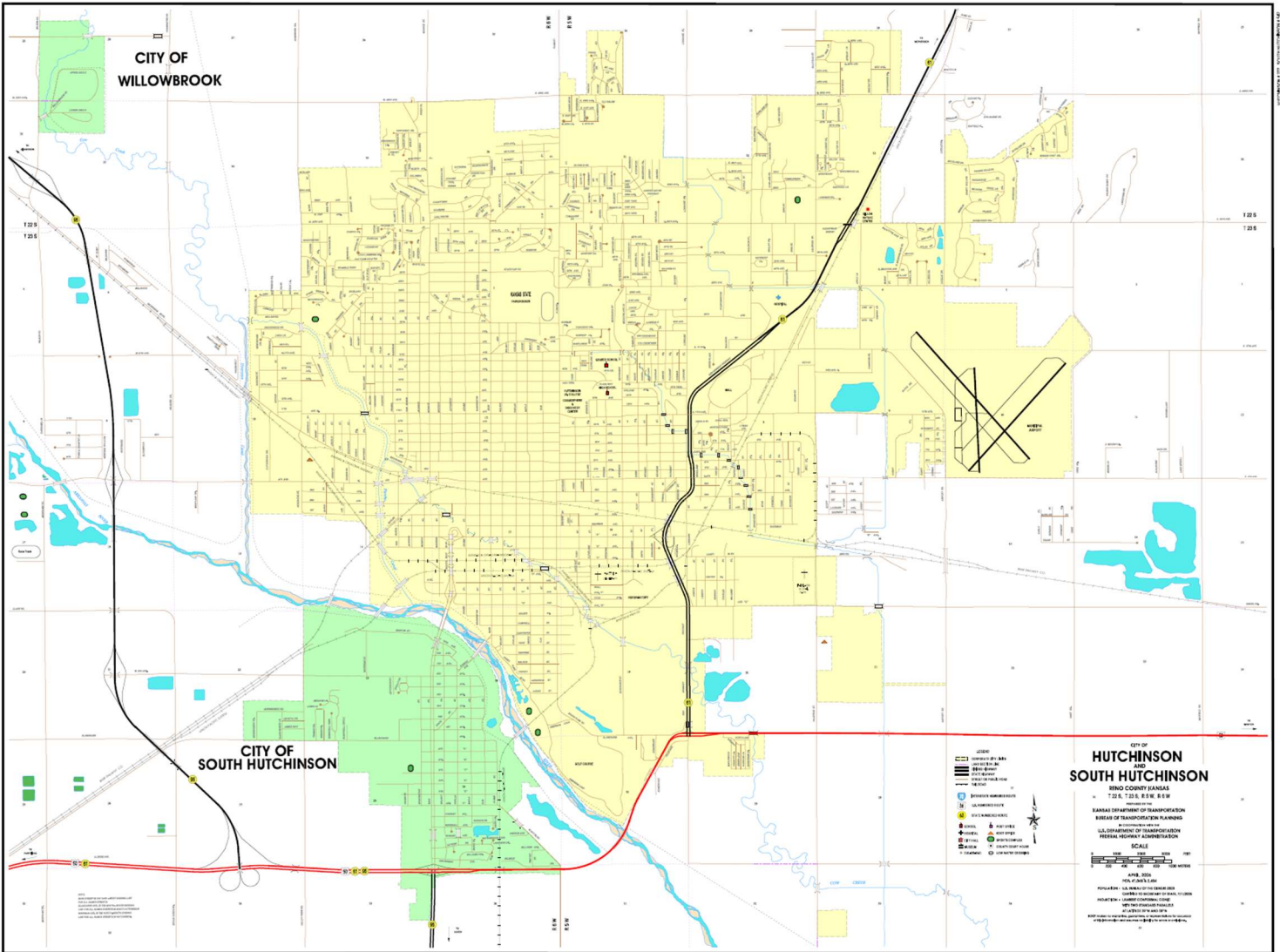
Hutchinson, Kansas: (50 miles Northwest of Wichita); The grain elevator scenes were filmed in Hutchinson: (May 21 - 22, 1955); 2 days of shooting;

May 21 - 22, 1955; 2 days of shooting; The grain elevator scenes were filmed in Hutchinson: Also, the bath house scene was filmed here at the State fairgrounds.

RED STAR: Corner of E. 4th Avenue and N. Halstead Street, Hutchinson, Kansas: Grain Elevator scenes.

BLUE STAR: Crescent Boulevard, Hutchinson, Kansas: This is where they filmed the background footage shown while Howard and Rosemary are driving to the picnic (viewed from the car's rear window) and Rosemary takes a drink of whiskey;





CITY OF
WILLOWBROOK

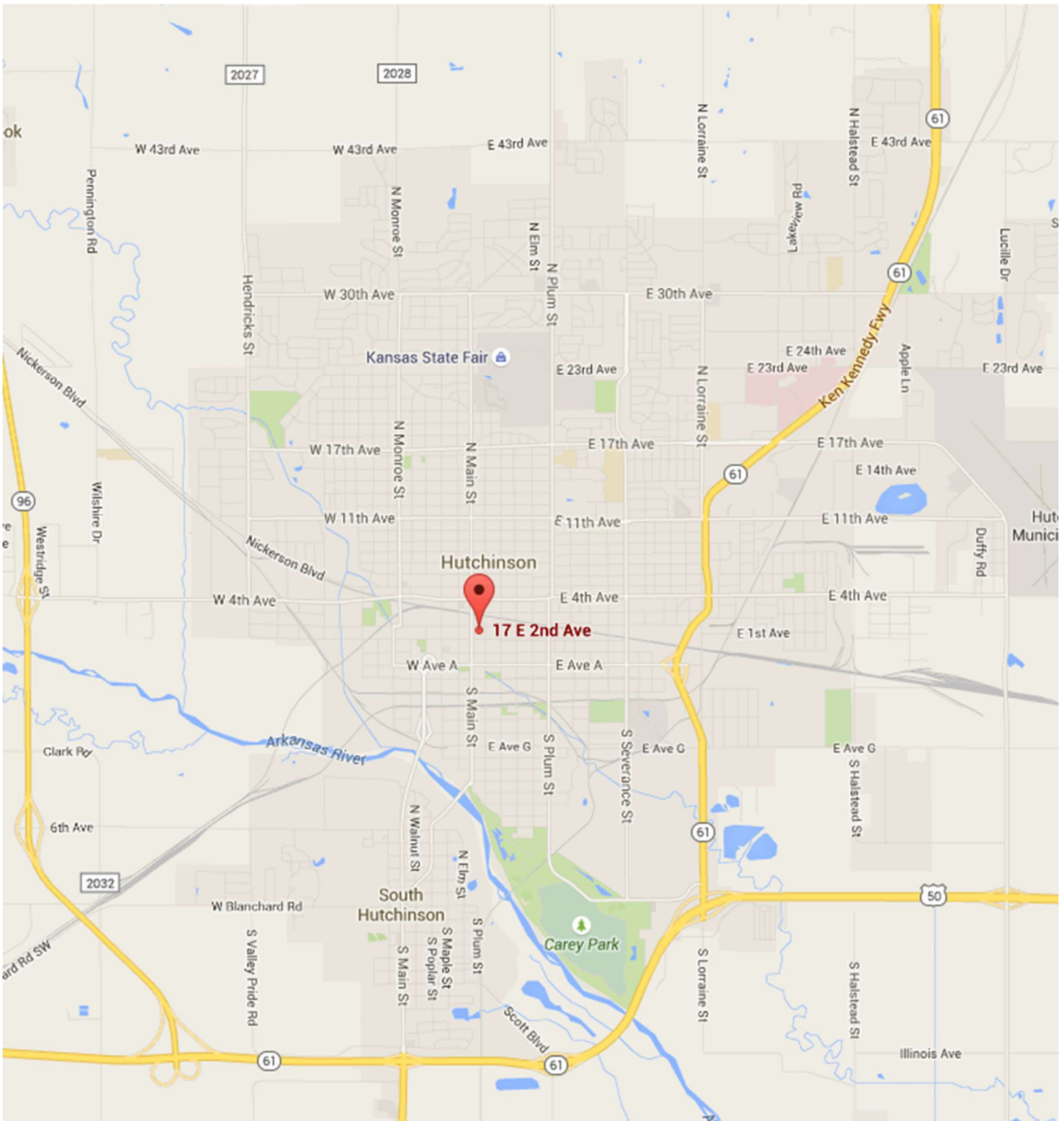
CITY OF
SOUTH HUTCHINSON

CITY OF
HUTCHINSON
AND
SOUTH HUTCHINSON

BOND COUNTY KANSAS
T.22S, T.23S, R.9W, S.6W
PROJECT NO. 09-001
KANSAS DEPARTMENT OF TRANSPORTATION
BUREAU OF TRANSPORTATION PLANNING
PLANNING AND DESIGN DIVISION
ILLINOIS DEPARTMENT OF TRANSPORTATION
FEDERAL HIGHWAY ADMINISTRATION

DATE: 06/01/09
SCALE: 1" = 400' (AS SHOWN)
PROJECT: SOUTH HUTCHINSON AND SOUTH HUTCHINSON BOND COUNTY KANSAS
DESIGNER: ILLINOIS DEPARTMENT OF TRANSPORTATION
DRAWN BY: JAMES H. HARRIS
CHECKED BY: JAMES H. HARRIS
DATE: 06/01/09

- LEGEND
- STREET
- RAILROAD
- WATER
- PARK
- UNDEVELOPED
- UTILITY
- INDUSTRIAL
- RESIDENTIAL
- COMMERCIAL
- OFFICE
- GOVERNMENT
- RELIGIOUS
- EDUCATIONAL
- RECREATION
- OTHER



Corner of E. 4th Avenue and N. Halstead Street, Hutchinson, Kansas: (RED star in Hutchinson map shown above):

- A: Cargill Grain, 309 North Halstead Street, Hutchinson, KS:
Where Alan shows Hal the giant grain elevators (Allen's family business), and Alan said, "Hello Red, you're not working today?" to one of the workers, (this was not the grain elevator that they walked onto its roof);

- B: Security Grain Elevator (Now called ADM Grain), 2503 East 4th Avenue, Hutchinson, KS: (corner of N Halstead st and E 4th Ave)

Where the Security Grain Elevator at Fourth and Halstead became the focal point for interior (man lift) and rooftop shots, including a sequence on top of the structure where they filmed Hal's "I just GOT to get somewhere in this world" scene; see photo below and satellite shot with label "B". (The elevator machine room can be observed on the left side of the building's roof, which is where Hal and Alan had emerged - it is the only grain elevator in the area with the small machine room on its roof - see photo below).

- C: ADM Grain Elevator Building, 1 North Halstead Street, Hutchinson, KS:

Not a filming location, but this building was filmed at a distance from top of the Security Grain Elevator; Alan said that "that is our newest one.. it hold's 10 million bushels," and where Hal responded, "Wow! That's a lot of biscuits!"



Hutchinson, Kansas







Crescent Boulevard, Hutchinson, Kansas: (BLUE star in Hutchinson map shown above):

This is where they filmed the background footage shown while Howard and Rosemary are driving to the picnic (viewed from the car's rear window) and Rosemary takes a drink of whiskey; (RED arrow shows the direction that the car traveled); Hopefully, nobody from her School Board lived on Crescent Boulevard.



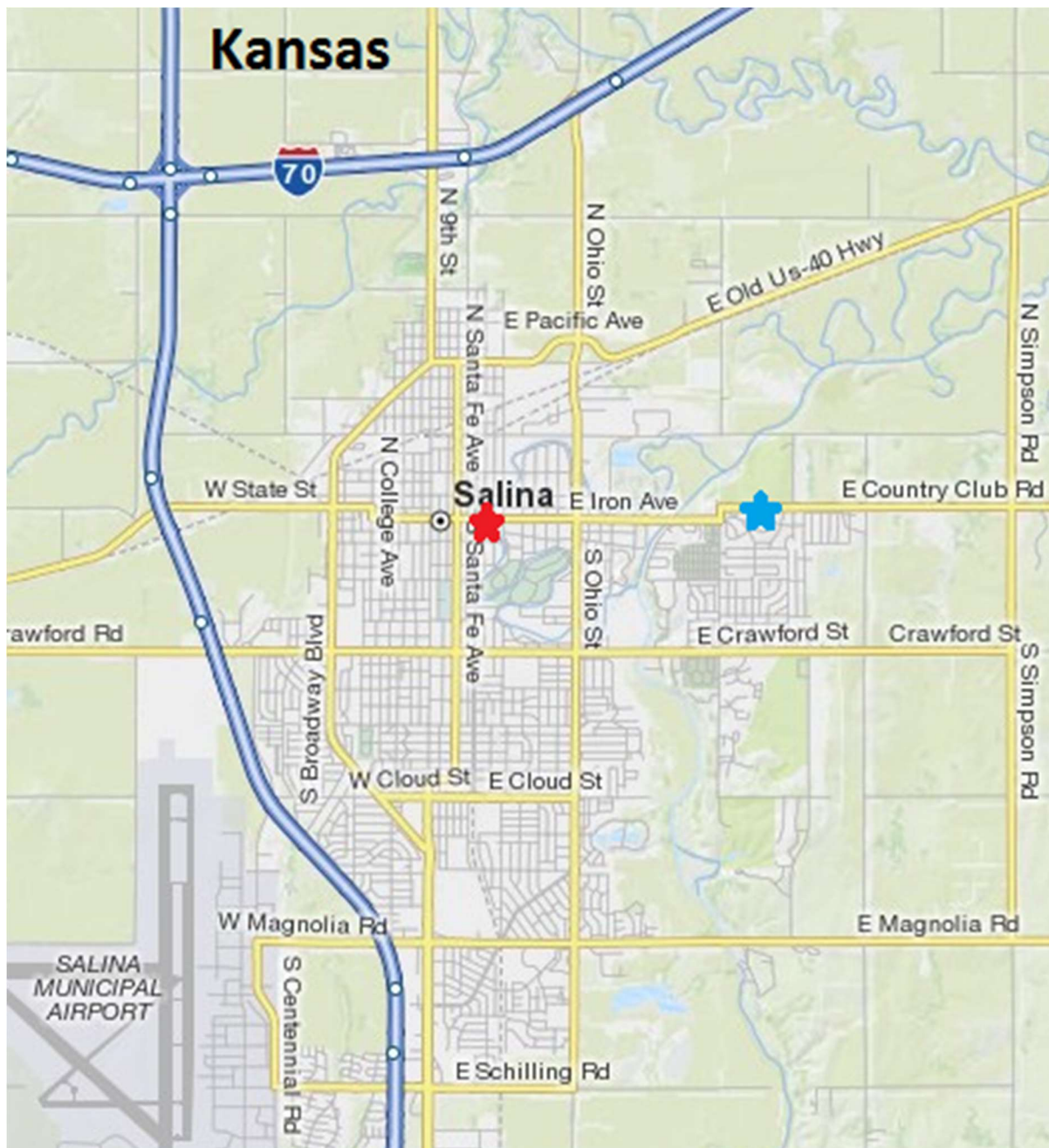
Salina

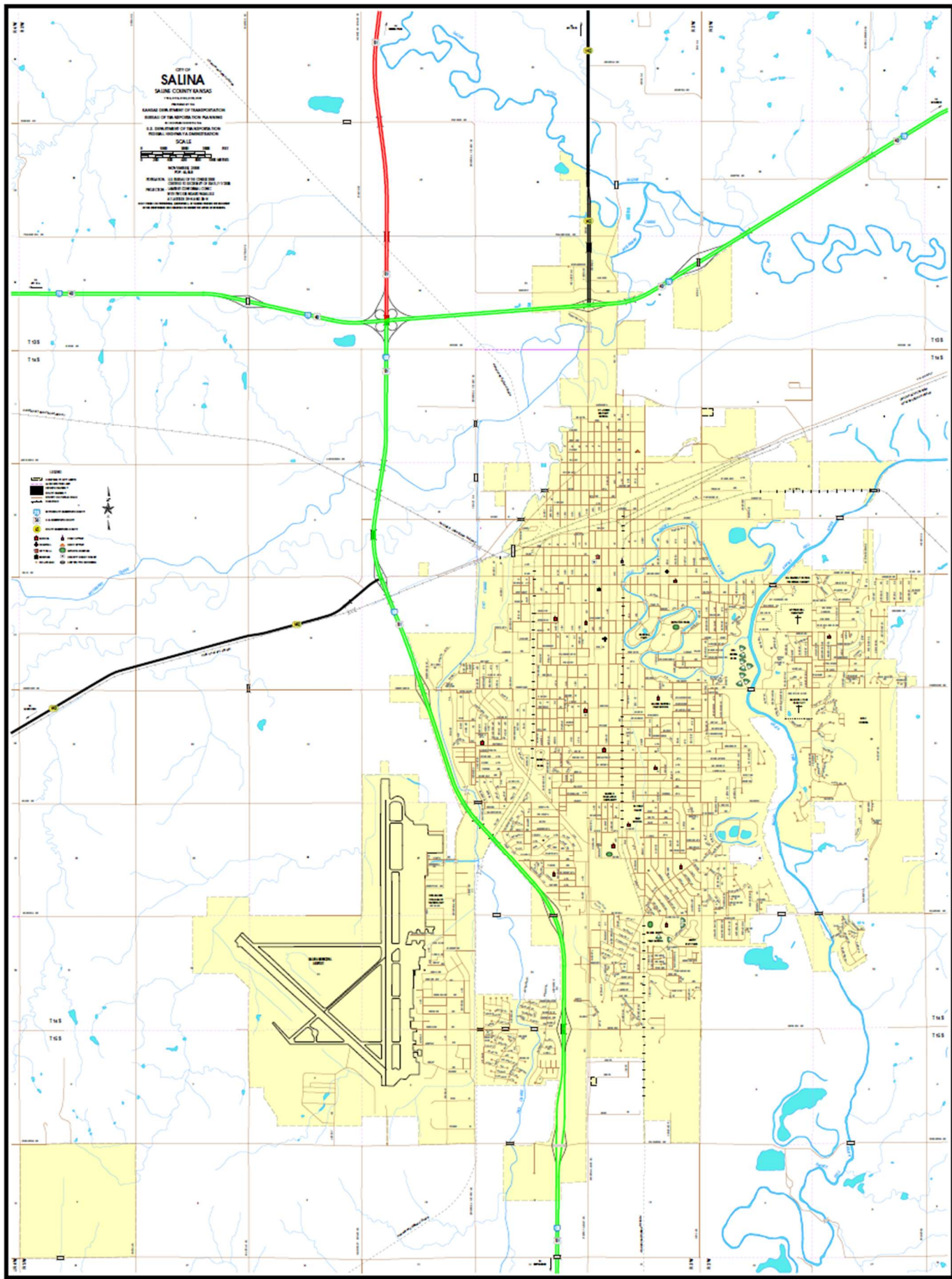
Salina, Kansas: (90 miles north of Wichita); Several parts were filmed in Salina: (May 10 - 20, 1955); 10 days of shooting;

May 10 - 20, 1955; 10 days of shooting; May 14, 1955: Holden and Novak arrived with the crew in Salina on a chartered plane; Several parts were filmed in Salina:

May 16, 1955: Fiming began in Salina, Kansas;

- RED STAR: 275 East Iron Avenue and S. 4th Street, Salina, Kansas: (where the Union Pacific railway crosses East Iron Avenue): Picnic's train depot opening scenes and others.
- BLUE STAR: 417 East Country Club Road, Salina, Kansas: The Salina home facing the Country Club golf course that was used as the scene where Hal meets Alan at the Benton's home where Mr. Benson and his son Alan are practicing golf;





CITY OF SALINA

SALINE COUNTY KANSAS

PLANNING DIVISION

PROJECT: I-70 CORRIDOR

NOVEMBER 2008

SCALE: 1" = 100'

AGENCY: KANSAS DEPARTMENT OF TRANSPORTATION

BUREAU OF TRANSPORTATION PLANNING

U.S. DEPARTMENT OF TRANSPORTATION

FEDERAL HIGHWAY ADMINISTRATION

- LEGEND
- Symbol: Roadway
- Symbol: Interstate
- Symbol: State Road
- Symbol: Local Road
- Symbol: Water
- Symbol: Airport
- Symbol: Station
- Symbol: Landmark
- Symbol: Boundary



275 East Iron Avenue and S. 4th Street where the Union Pacific railway crosses East Iron Avenue, Salina, Kansas: (RED Star on Salina Map shown above).

- A: Where the Union Pacific rail yard was selected for the opening scene where Hal arrives in Kansas after bumming a ride on a freight train located just north of the East Iron Avenue bridge along the Smoky Hill River that runs through the city.

Night scene where Hal and Madge crawl back from the river bank, they emerge back near the track as the train approaches (on the other side of the river)

- B: Where the river waterfall is located and where Hal cleans up (on the other side of the river from where he got off the train);

Night scene where Hal hides from the police and hides under the waterfall in the Smoky Hill River where he then falls into it;

- C: Where Hal walks up the tracks toward the train station (notice the grain tower on the left says "Salina Seed Co.") (this grain tower burned down).
- D: Night scene Where Hal and Madge descend down to the river bank and where they have their first kiss (waterfall in distance);
- E: Night scene where Hal parks Alan's car to catch the next train out of town, and takes off his torn shirt;





Salina, Kansas

E Ash St

E Ash St

N Santa Fe Ave

N 5th St

E

A

B

C

D

N 3rd St

N 2nd St

E Iron Ave

E Iron Ave

E Iron Ave

S Santa Fe Ave

S 5th St

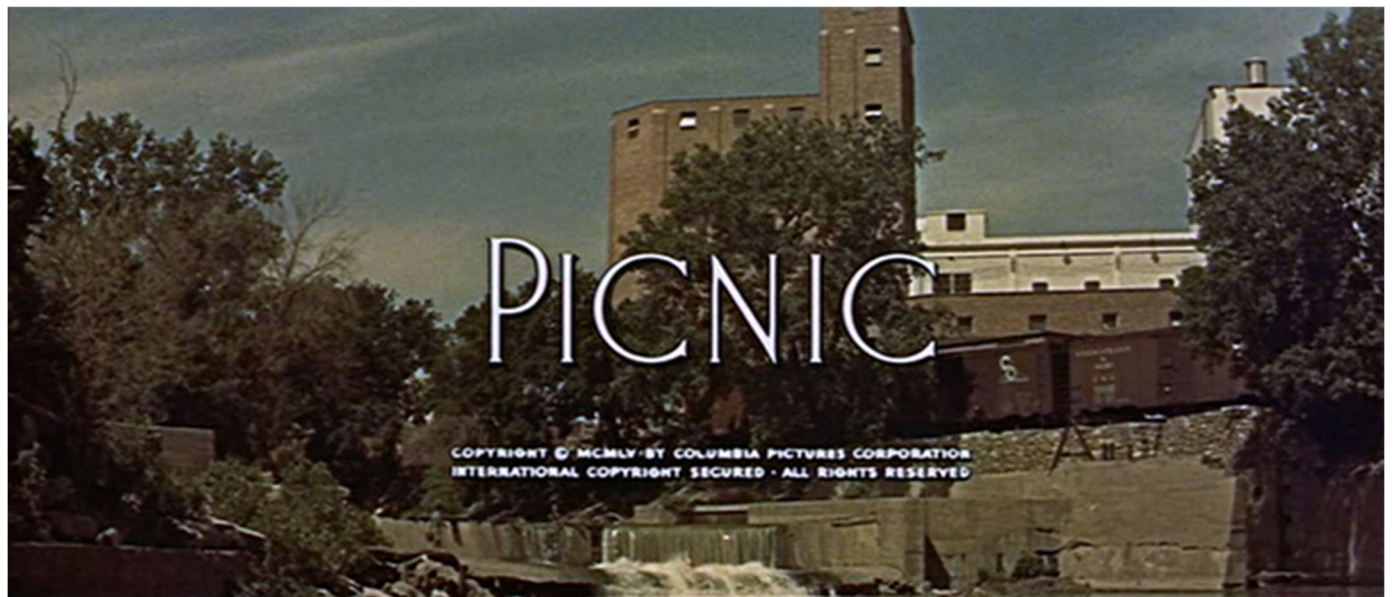
S 4th St

Union Pacific

S 3rd St

S 2nd St









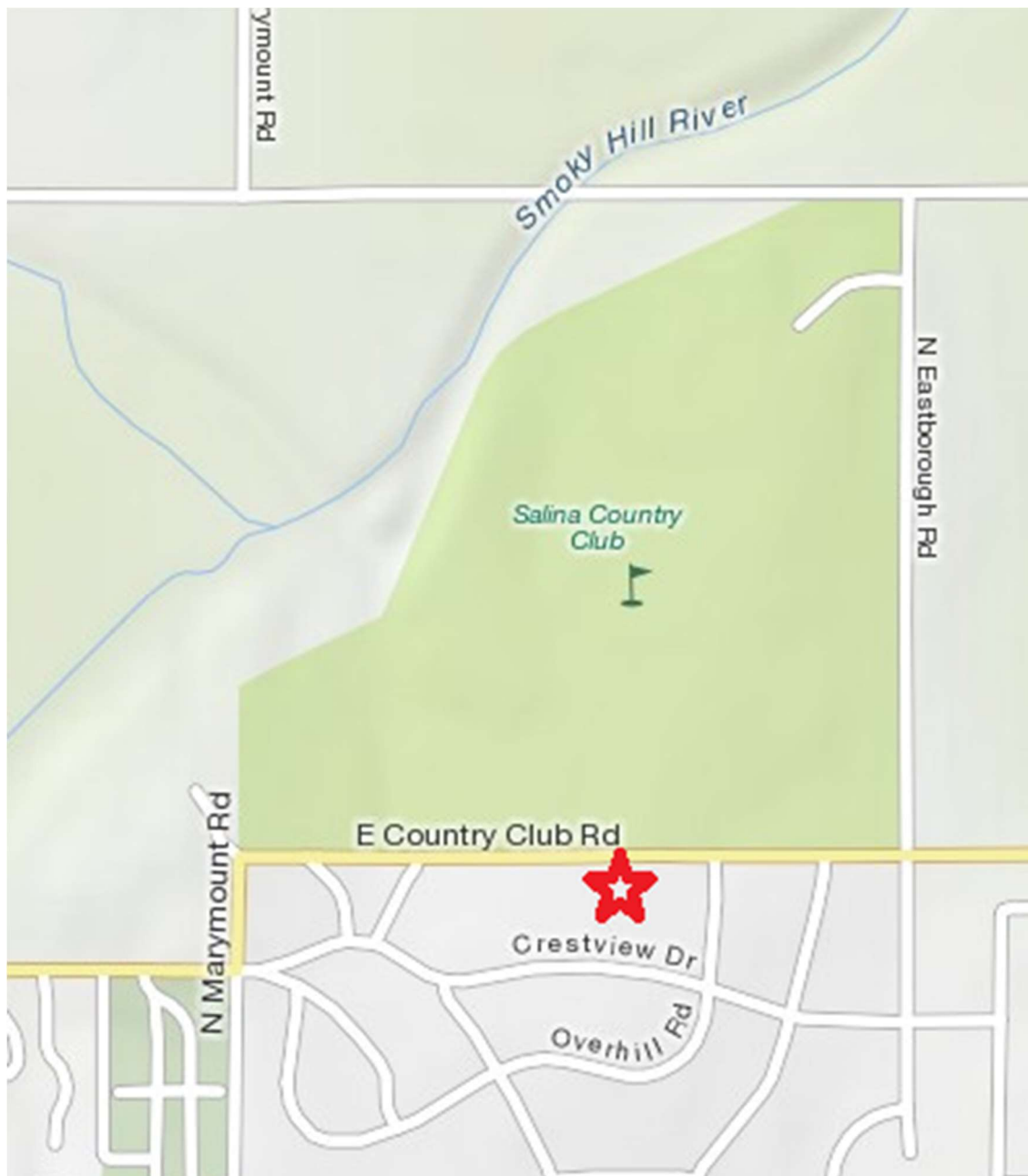




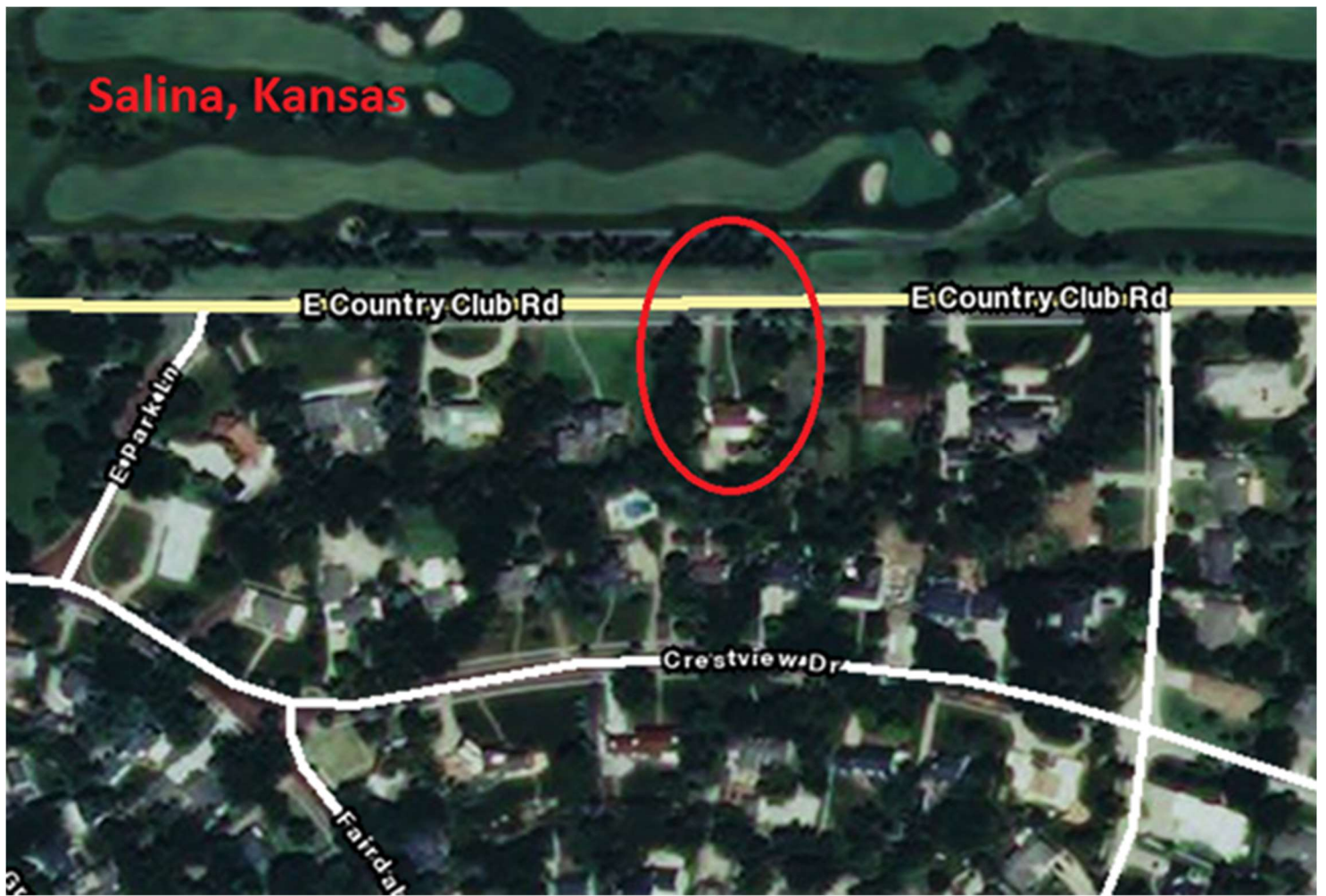


417 East Country Club Road, Salina, Kansas: (BLUE Star on Salina Map shown above):

- Alan Benson's Home: The Salina home facing the Country Club golf course that was used as the scene where Hal meets Alan at the Benson's home where Mr. Benson and his son Alan are practicing golf;
- Where the night scene was filmed when the cops are parked outside Alan's home and later where Hal speeds away;



Salina, Kansas





Nickerson

211 S. Nickerson Street, Nickerson, Kansas (on HW 96):

A: Where Madge finally leaves her mother and gets on the bus for Tulsa;

A & B: Where the two adjacent houses where The Owen's family live, with Mrs. Potts next door;

A & B & E: Where all the Owen's house shots were filmed;

C: Where the production crew used a train engine and ten railcars to augment Holden's arrival and departure scenes;

D: Where Reno Community High School was filmed (now called "Nickerson High" at 305 S. Nickerson, Nickerson, KS); (can be seen directly across the street from the Owen's House in many shots);

E: Where Hal walks down an alley (with a grain elevator in the background) to Mrs. Potts backyard (see YELLOW arrow in the 5th map below to see the direction down the alley that Hal walked, with grain tower C in the background)

F: Intersection of W Ave H and Kent Street: Aerial bus shot started from this location. Use Google 3D and by using the "Ctrl" key, you can manipulate the 3D Aerial view to trace out the exact path used in the movie.

Tidbits:

- 211 South Nickerson Street – Owen's Family House
- 207 South Nickerson Street – Mrs. Potts's House
- 305 South Nickerson Street – The School

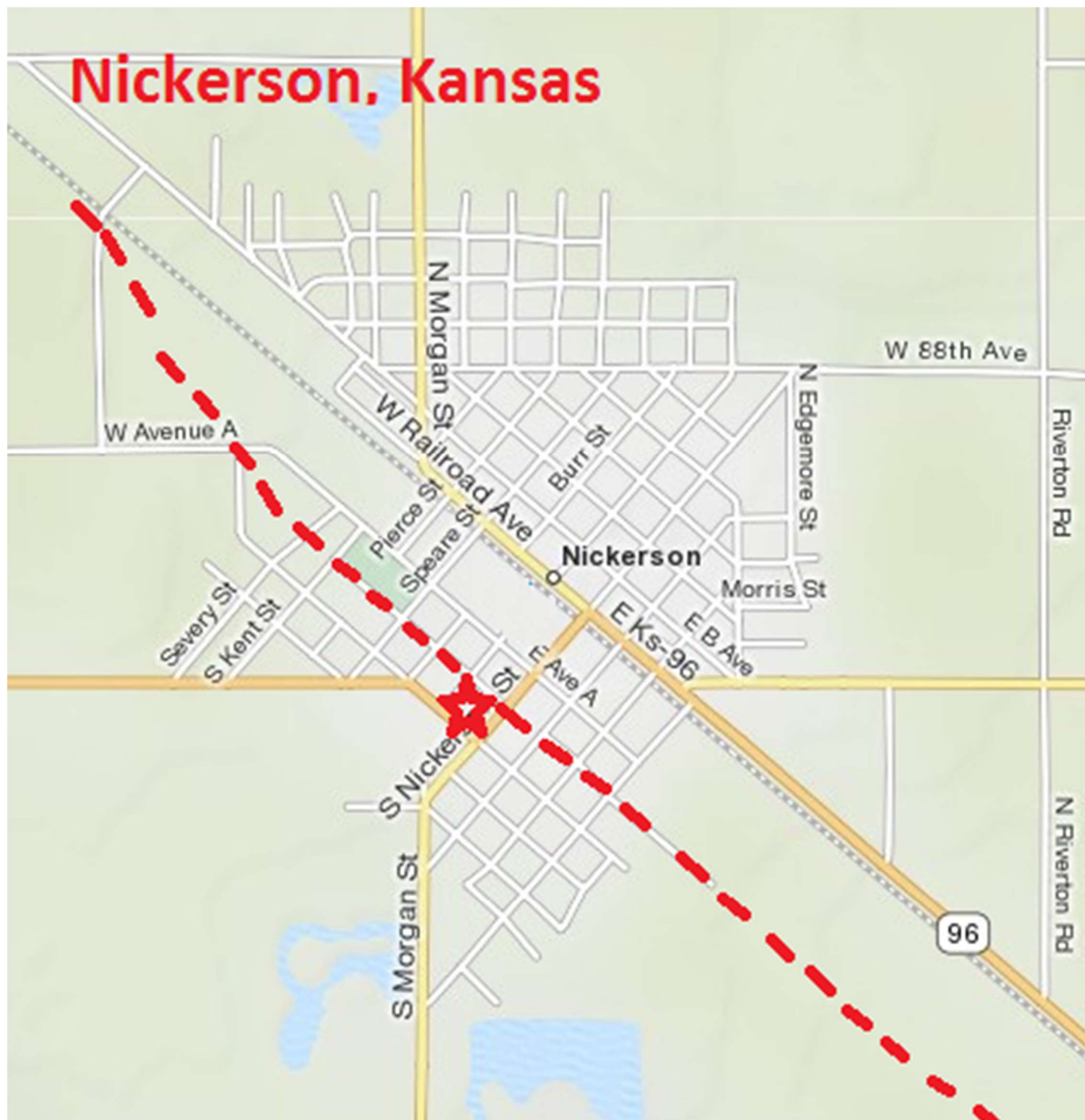
There were two real parallel train tracks that were shot in the movie in Nickerson, at the end of the alley behind the Owen's house. Various movie shots verify that the tracks were real, such as a train crossing at HW 96 and W Avenue G. The train tracks were later removed. Scars from the old tracks can still be seen from satellite shots of the area.

The film's last clip, the helicopter shot, was filmed by Haskell Wexler, James Wong Howe's assistant.

Bus & Aerial Scenes:

- Owen House: The bus stops on W Ave H just past the S Nickerson intersection, in the northwest direction. Madge boards the bus.
- Helicopter Aerial: The helicopter aerial bus scene started W Ave H just (northwest direction) at the Kent Street intersection, just 4 blocks just down the road from the Owen's house. There the bus proceeds northwest along W Ave H, passes Severy Street and continues in the direction where the road turns to the right and becomes northbound as the camera pans to the distance and the train can be viewed in the distance. The final couple of seconds of the film shows the train getting ready to curve into the main railway. The train was on the old set of tracks that have since been removed.

Nickerson, Kansas



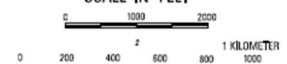
MAP OF NICKERSON

RENO COUNTY, KANSAS

T 22 S R 7 W

COMPILED AND DRAWN BY THE
KANSAS DEPARTMENT OF TRANSPORTATION
BUREAU OF TRANSPORTATION PLANNING
IN COOPERATION WITH THE
U.S. DEPARTMENT OF TRANSPORTATION
FEDERAL HIGHWAY ADMINISTRATION

SCALE IN FEET



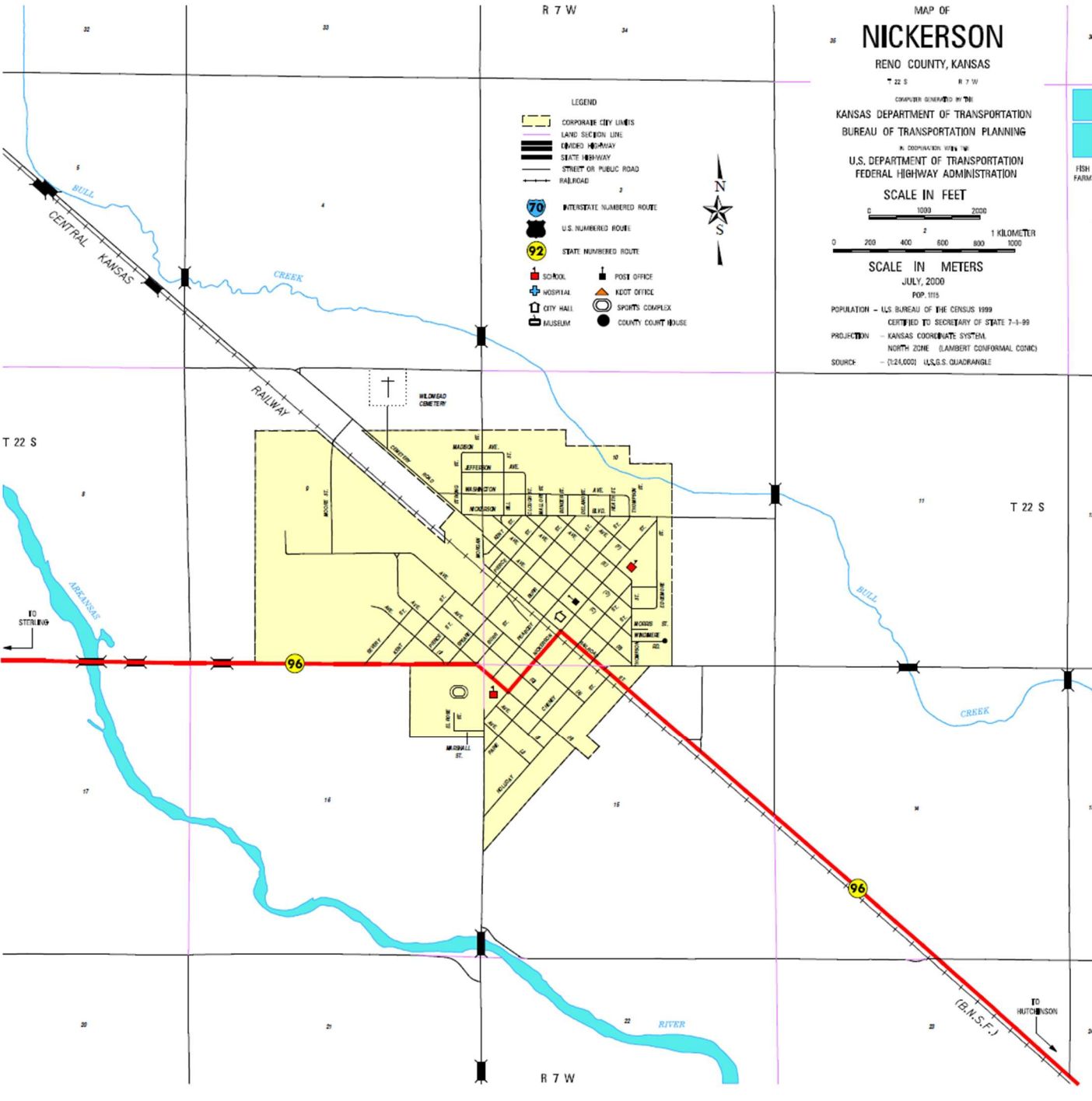
SCALE IN METERS

JULY, 2000

POP. 1115

POPULATION - U.S. BUREAU OF THE CENSUS 1999
CERTIFIED TO SECRETARY OF STATE 7-1-99
PROJECTION - KANSAS COORDINATE SYSTEM,
NORTH ZONE (LAMBERT CONFORMAL CONIC)
SOURCE - (1:24,000) U.S.S. QUADRANGLE

R 7 W



R 7 W

T 22 S

T 22 S

(B.M.S.F.)

Nickerson, Kansas



Nickerson, Kansas



Nickerson, Kansas



Nickerson, Kansas



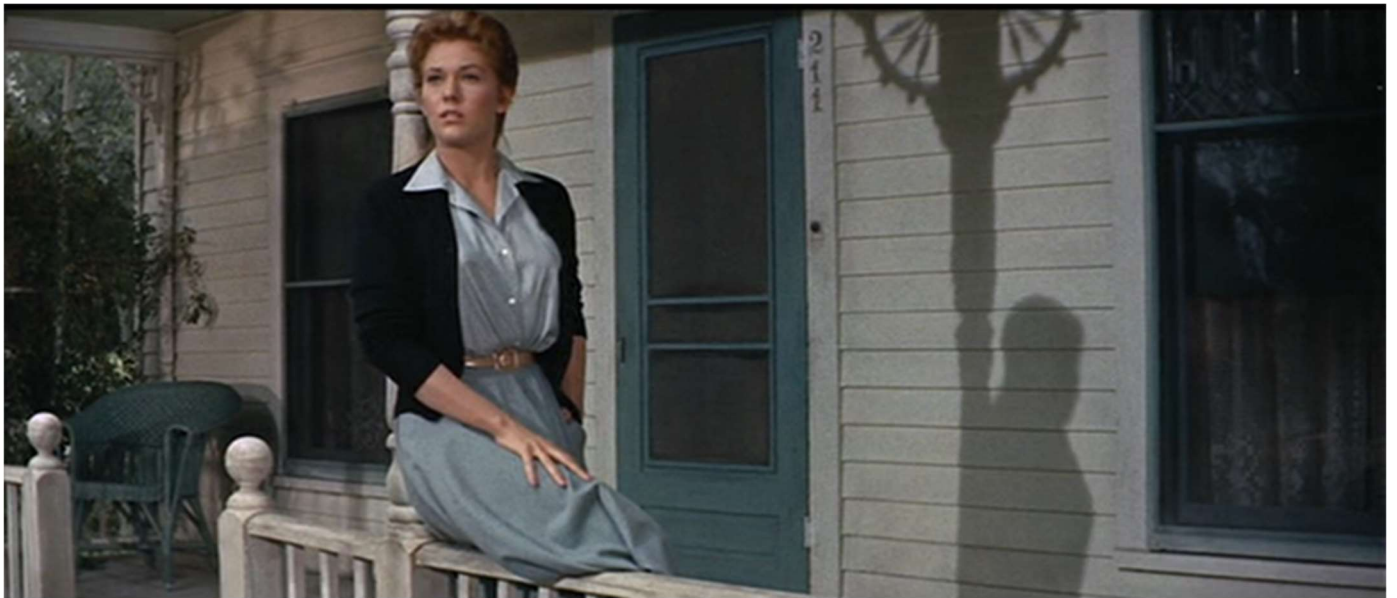
Mrs. Potts House

Owens House













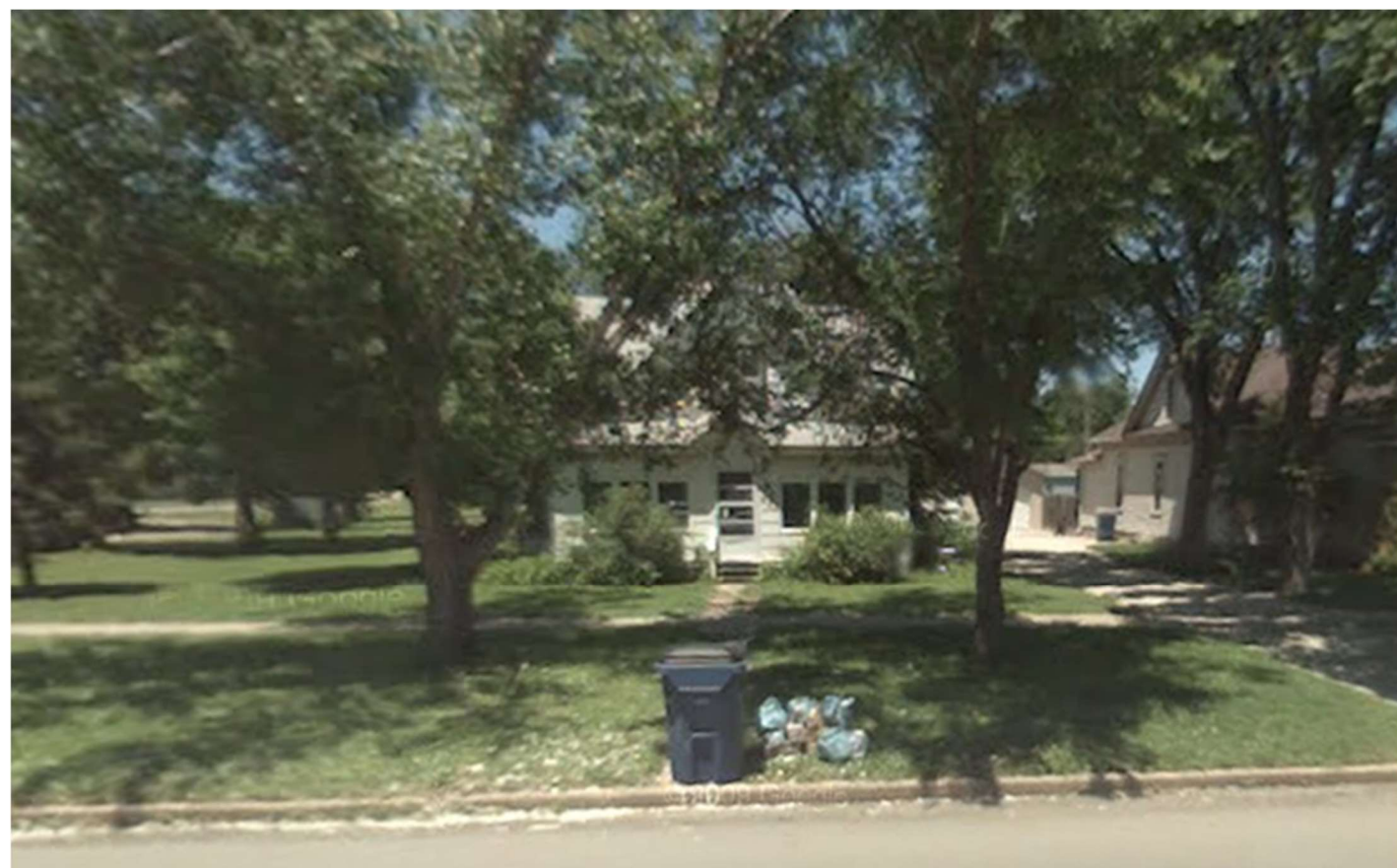


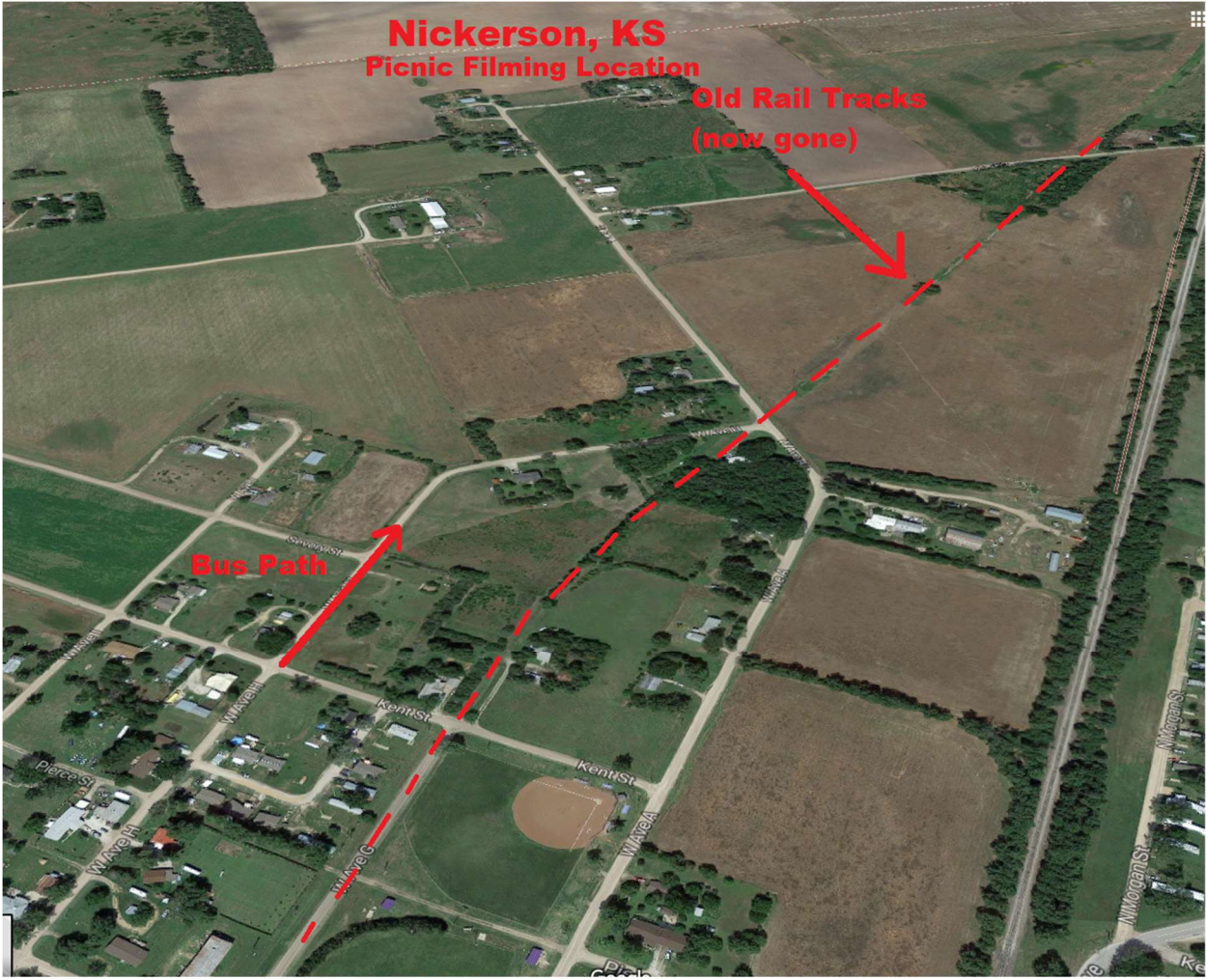
















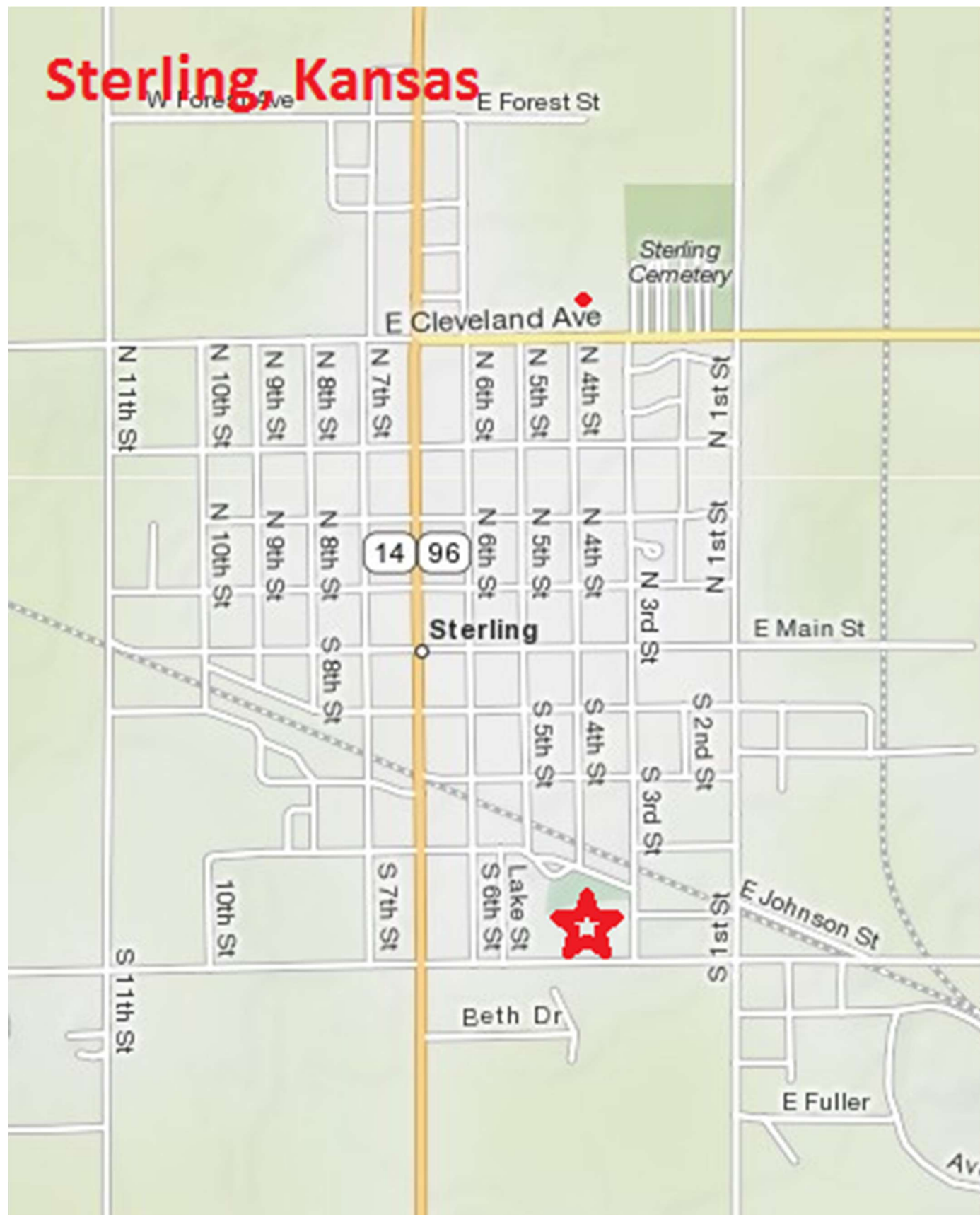
Sterling

Sterling, Kansas: (75 miles Northwest of Wichita); The swimming hole/dock scenes were filmed in Sterling: (June 19, 1955); 1 day of shooting; (This was last day of shooting in Kansas; the stars left Kansas that afternoon);

June 19, 1955); 1 day of shooting;The swimming hole/dock scenes were filmed in Sterling: (This was last day of shooting in Kansas; the stars left Kansas that afternoon);

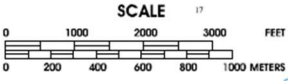
- Where everybody goes swimming at "Sterling Lake" and Hal jumps off the diving board;
- A: The approximate location of the old wooden dock that Hal and Millie jumped from; (note that it is no longer there);
- B: The approximate location of the shot of Alan & Madge's kiss by the Sterling Lake (notice grain elevator in the upper left, the footbridge in the lake middle left and bath house in the middle area);
- Note that a swimming pool now occupies some of the sandy beach area that was shown between the swimming dock and the bath house;

Sterling, Kansas



CITY OF
STERLING
RICE COUNTY KANSAS

PREPARED BY THE
**KANSAS DEPARTMENT OF TRANSPORTATION
BUREAU OF TRANSPORTATION PLANNING**
IN COOPERATION WITH THE
**U.S. DEPARTMENT OF TRANSPORTATION
FEDERAL HIGHWAY ADMINISTRATION**



JULY, 2006
POP. 2,586

POPULATION - U.S. BUREAU OF THE CENSUS 2000
CERTIFIED TO SECRETARY OF STATE, 7/1/2005

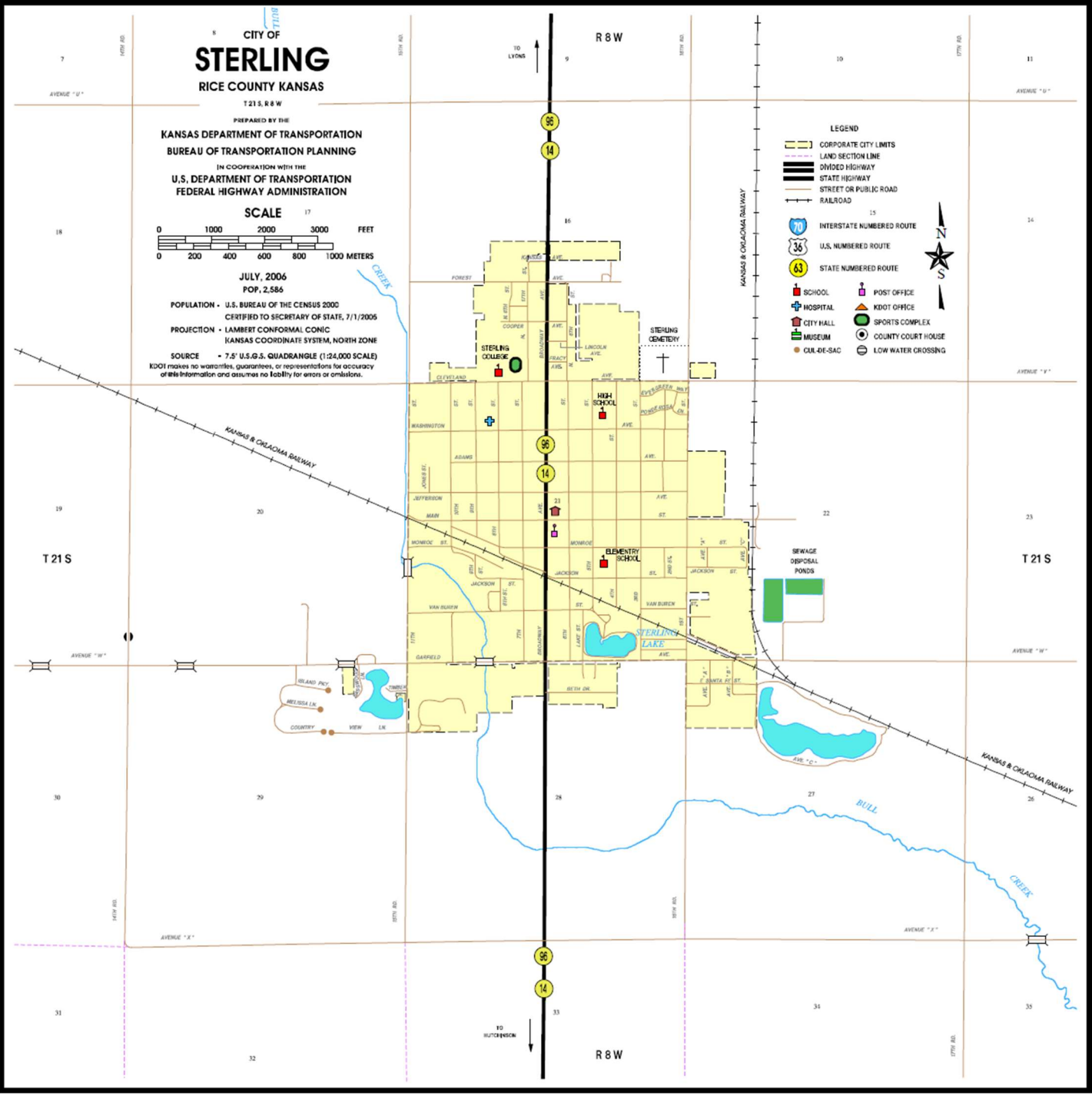
PROJECTION - LAMBERT CONFORMAL CONIC
KANSAS COORDINATE SYSTEM, NORTH ZONE

SOURCE - 7.5' U.S.G.S. QUADRANGLE (1:24,000 SCALE)

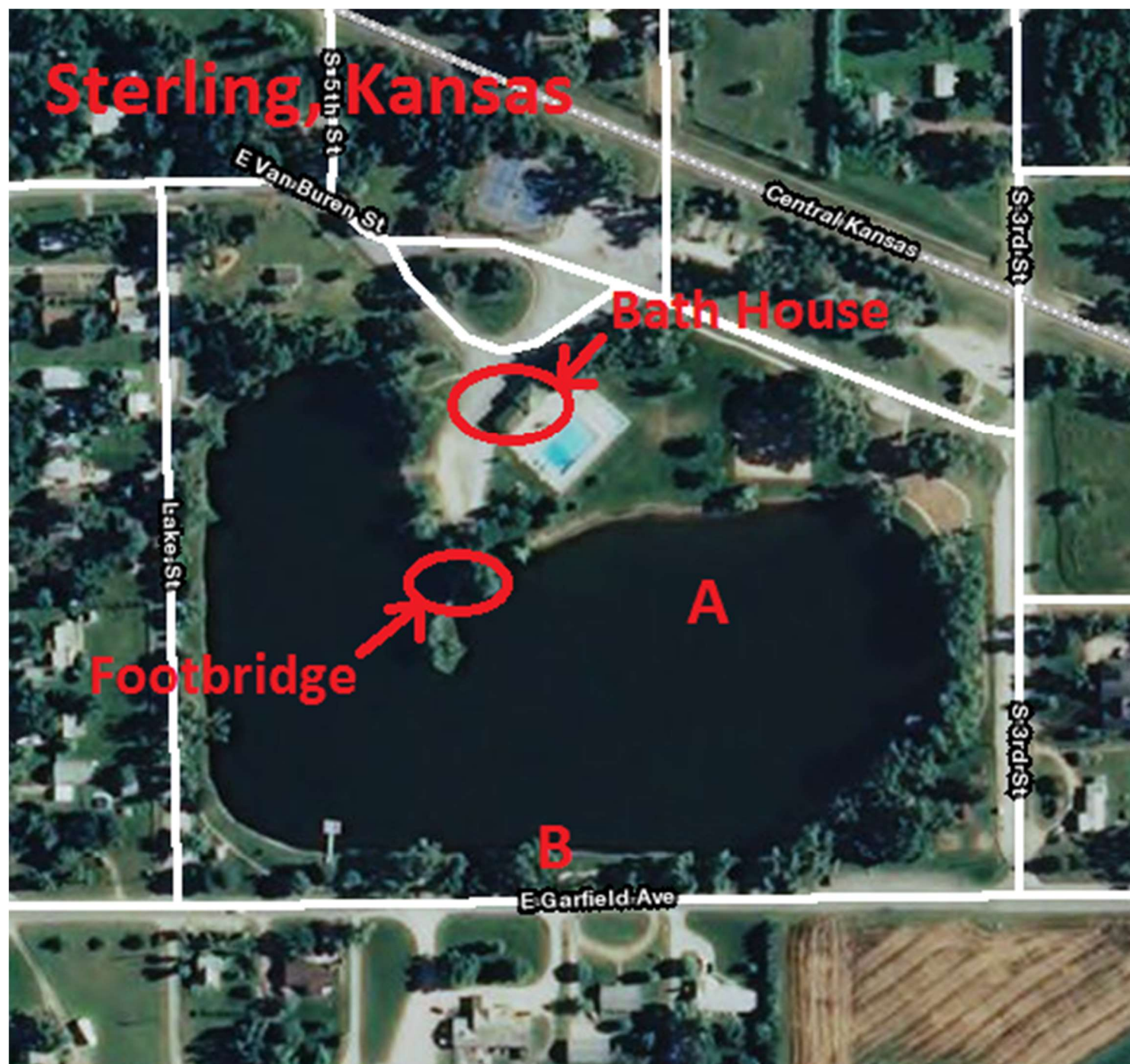
KDOT makes no warranties, guarantees, or representations for accuracy of this information and assumes no liability for errors or omissions.

LEGEND

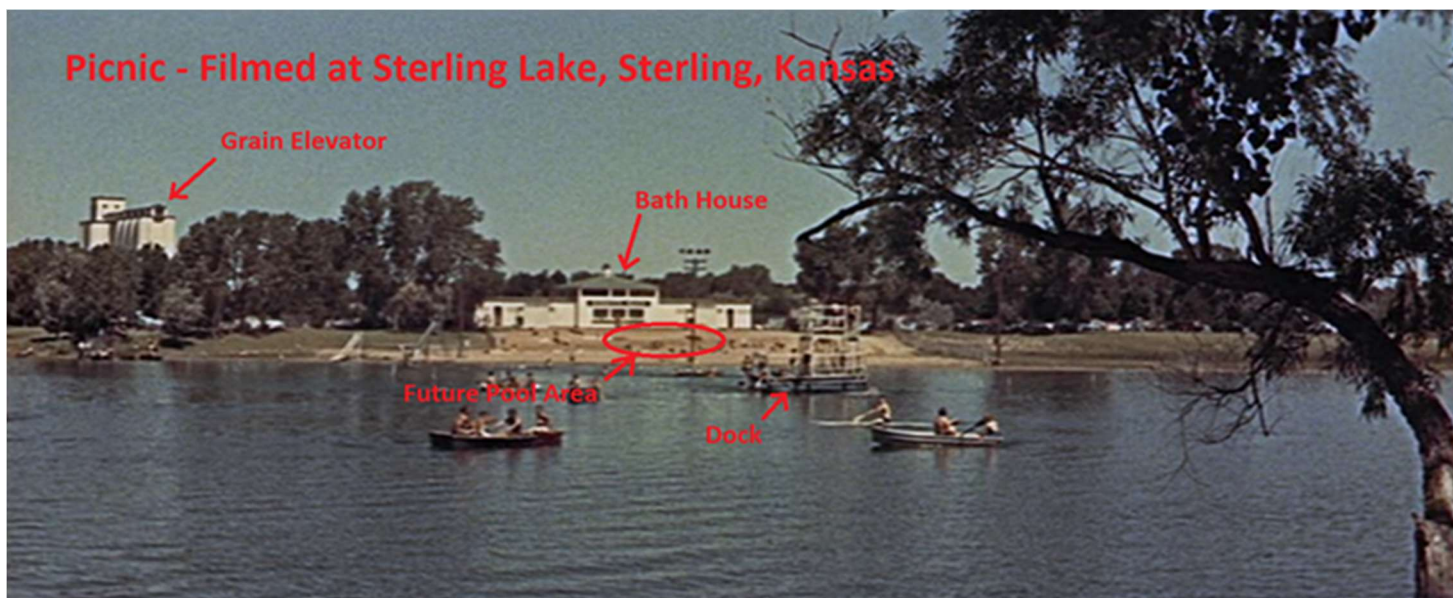
- CORPORATE CITY LIMITS
- LAND SECTION LINE
- DIVIDED HIGHWAY
- STATE HIGHWAY
- STREET OR PUBLIC ROAD
- RAILROAD
- INTERSTATE NUMBERED ROUTE
- U.S. NUMBERED ROUTE
- STATE NUMBERED ROUTE
- SCHOOL
- HOSPITAL
- CITY HALL
- MUSEUM
- CUL-DE-SAC
- POST OFFICE
- KDOT OFFICE
- SPORTS COMPLEX
- COUNTY COURT HOUSE
- LOW WATER CROSSING







Picnic - Filmed at Sterling Lake, Sterling, Kansas



Picnic - Filmed at Sterling Lake, Sterling, Kansas



Picnic - Filmed at Sterling Lake, Sterling, Kansas





Sterling, Kansas

Google Street View of Bath House

